

ALEA III

Contemporary Music Ensemble in Residence at Boston University since 1979
Theodore Antoniou, *founder*

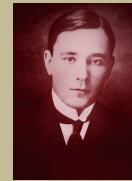
Music from Portugal

Friday, March 22, 2019, at 7:30 PM

Marsh Chapel – 735 Commonwealth Avenue

Admission is Free

An evening of works by Portuguese composers
from the early 20th century until our days.



Ann-Marie Iacoviello, *soprano*

Meghan Davis, *clarinet*

Aija Reke, *violin*

Yoni Battat, *viola*

Hyun-Ji Kwon, *violoncello*

Inês Andrade, *piano*



Curated by Inês Andrade

Sérgio Azevedo*

Fernando Lopes Graça

Vianna da Motta

Adria Stolk*

Eurico Carrapatoso

Tiago Cabrita

António Fragoso



* World première



<http://www.aleaIII.com>

The Marsh Chapel is located on the B branch of the MBTA Green Line at Boston University Central stop, and is wheelchair accessible.

For parking info log on <https://www.bu.edu/chapel/about/directions/>